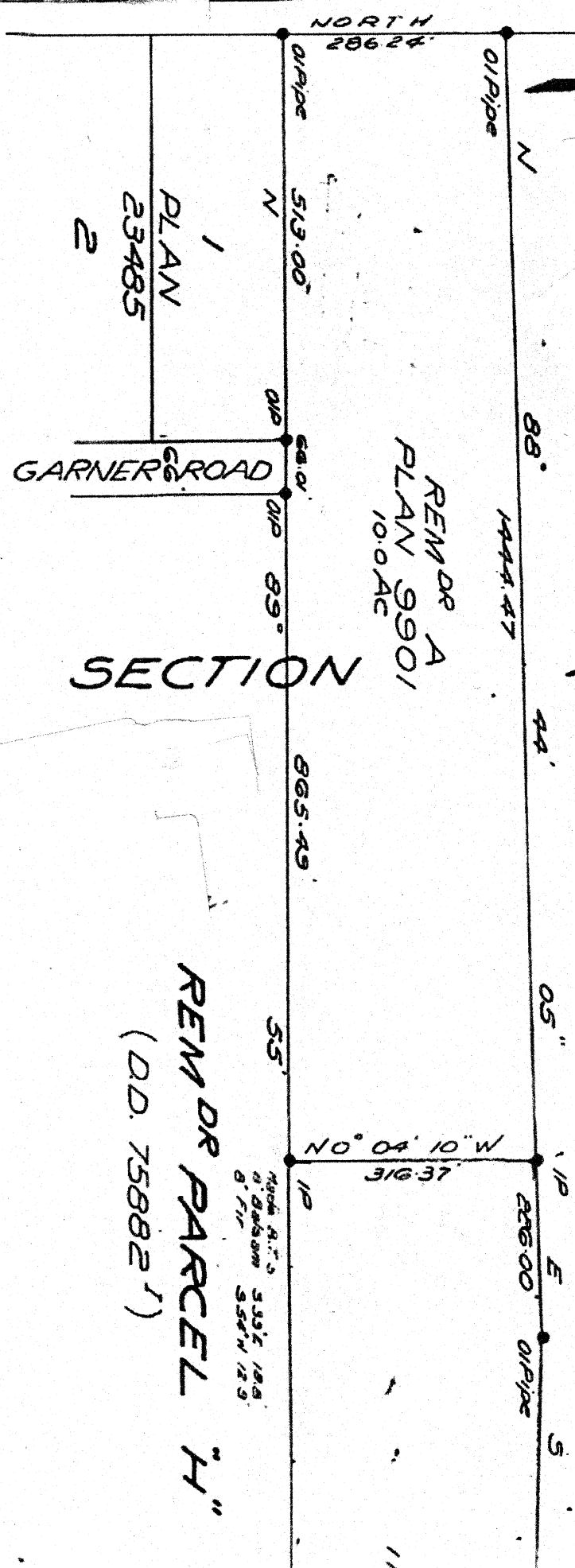


Dealing's Astronomic derived from Plan 9901
 Corners are marked with 1/2" Square galvanized Iron Pins
 and referenced by triangular Cedar Posts set in Rock Mounds.
 Iron Pipe
 1/2" Sq Gal Iron Pin " " " O.I.P.
 1/2" Sq Gal Iron Pin set " " " O.I.P.

This Plan lies within the Capital/Regional District

Made B.T.S.
 12 1/2" x 12 1/2" N.W. E. 45.0
 22" Cedar S.W. E. 27.8



1. Alison R. Handle of Ganges Harbour, British
 Columbia Land Surveyor make oath and say
 that I was present and did personally
 superintend the survey represented by this
 plan and that the survey and plan are correct.
 The said survey was completed on the 20th day
 of June 1972.

Alison R. Handle
 Sworn before me this
 25th day of June 1972

Approved under the Land Registry Act
 this 24th day of August 1972

... ..